



Town and Country Planning (General Permitted Development) (England) Order 1995

Town and County Planning (General Permitted Development) (Amendment) (England) Order 2015

Notice of Direction without immediate effect made under Article 4 (1) to which paragraph 1 of Schedule 3 applies

Stevenage Borough Council (“the Borough Council”) has made a Direction under Article 4(1) of the Town and Country Planning (General Permitted Development) Order 2015, as amended (“the General Permitted Development Order”).

The Direction relates to development comprising the change of use of a building from a use falling within Class E(g)(i) (offices) of the Schedule to the Town and Country Planning (Use Classes) Order 1987 as amended, to a use falling within Class C3 (dwellinghouses) of that Order and removes permitted development rights under Class O Part 3 to Schedule 2 of the General Permitted Development Order for this type of development from the date when the Direction comes into force.

The Article 4 Direction applies to the 7 individual sites within Pin Green Employment Area, and 66 individual sites in Gunnels Wood Employment Area as show edged and hatched red on the plans attached to the Direction. A copy of the Direction, including a map defining the areas covered, can be viewed at the Stevenage Borough Council Offices in Danestrete, Stevenage Central Library at Southgate and the Old Town Library at 38 High Street or on the Council’s website at www.stevenage.gov.uk/.

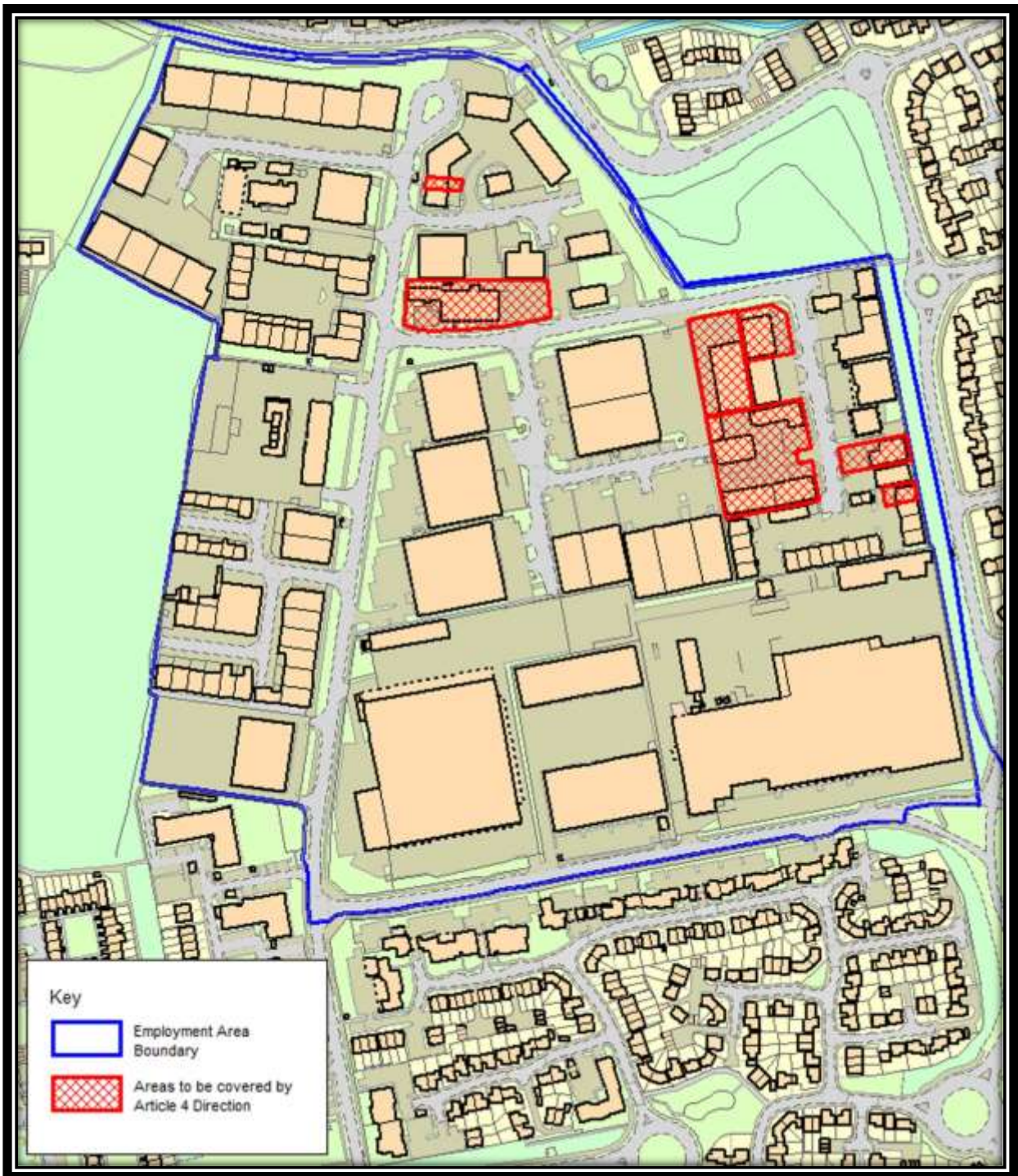
Representations concerning the Article 4 Direction may be made from 20 July 2022 to 17 August 2022, via <https://forms.office.com/r/f43GmYRR6X>, by email to planningpolicy@stevenage.gov.uk or by post to Planning Policy Team, Stevenage Borough Council, Daneshill House, Danestrete, Stevenage, Hertfordshire, SG1 1HN.

The Article 4 Direction will come into force, subject to confirmation by the Borough Council, on the 1 October 2022, once the Direction is confirmed.

Matt Partridge
Chief Executive

Dated 12 July 2022

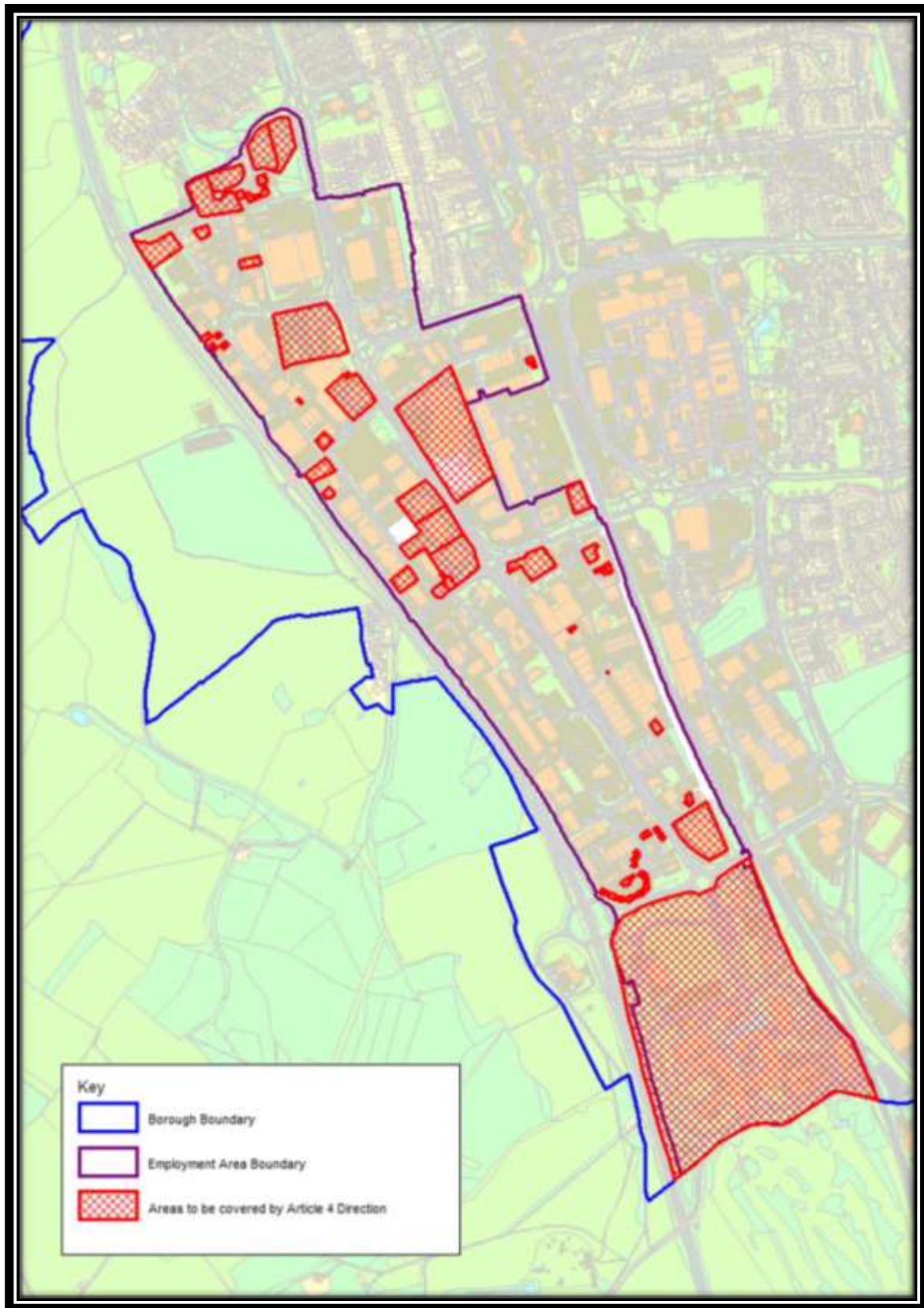
Pin Green Employment Area



Address	Use Class
Unit 2, Wedgewood Court, Wedgewood Way, Stevenage SG1 4QR	E(g)(i) Offices
3 Parsons Green Estate, Boulton Road, Stevenage SG1 4QG	E(g)(i) Offices
Unit 1, Boulton Road, Stevenage SG1 4QX	E(g)(i) Offices
Unit 21 Boulton Road, Stevenage SG1 4QL	E(g)(i) Offices
Aston House, Boulton Road, Stevenage SG1 4QX	E(g)(i) Offices

Address	Use Class
Britannia House, Boulton Road, Stevenage SG1 4QX	E(g)(i) Offices
Niall House, Boulton Road, Stevenage SG1 4QX	E(g)(i) Offices

Gunnels Wood Employment Area



Address	Use Class
Cagex House, Leyden Road, Stevenage SG1 2BP	E(g)(i) Offices
MDBA Site, Gunnels Wood Road, Stevenage, SG1 2DA	E(g)(i) Offices
Robertson House, Gunnels Wood Road, Stevenage SG1 2FQ	E(g)(i) Offices
Farnham House, Gunnels Wood Road, Stevenage SG1 2FQ	E(g)(i) Offices
Abel Smith House, Gunnels Wood Road, Stevenage SG1 2FQ	E(g)(i) Offices
Airbus Site, Gunnels Wood Road, Stevenage, SG1 2AS	E(g)(i) Offices
Unit 4, Access Business Park, Gunnels Wood Road, Stevenage SG1 2GR	E(g)(i) Offices
Park Managers Office, Gunnels Wood Park, Gunnels Wood Road, Stevenage SG1 2BH	E(g)(i) Offices
Redemption House Gunnels Wood Park, Gunnels Wood Road, Stevenage SG1 2TA	E(g)(i) Offices
Glaxo SmithKline Site, Gunnels Wood Road, Stevenage SG1 2BH	E(g)(i) Offices
Unit 1, Gateway 1000, Arlington Business Park, Whittle Way, Stevenage SG1 2FP	E(g)(i) Offices
Unit 2, Gateway 1000, Arlington Business Park, Whittle Way, Stevenage SG1 2FP	E(g)(i) Offices
Unit 3, Gateway 1000, Arlington Business Park, Whittle Way, Stevenage SG1 2FP	E(g)(i) Offices
Unit 4, Gateway 1000, Arlington Business Park, Whittle Way, Stevenage SG1 2FP	E(g)(i) Offices
Unit 5, Gateway 1000, Arlington Business Park, Whittle Way, Stevenage SG1 2FP	E(g)(i) Offices
Unit 6, Gateway 1000, Arlington Business Park, Whittle Way, Stevenage SG1 2FP	E(g)(i) Offices
Unit 7, Gateway 1000, Arlington Business Park, Whittle Way, Stevenage SG1 2FP	E(g)(i) Offices
Unit 8, Gateway 1000, Arlington Business Park, Whittle Way, Stevenage SG1 2FP	E(g)(i) Offices
Unit 9, Gateway 1000, Arlington Business Park, Whittle Way, Stevenage SG1 2FP	E(g)(i) Offices
Unit 10, Gateway 1000, Arlington Business Park, Whittle Way, Stevenage SG1 2FP	E(g)(i) Offices
Unit 11, Gateway 1000, Arlington Business Park, Whittle Way, Stevenage SG1 2FP	E(g)(i) Offices
Unit 12, Gateway 1000, Arlington Business Park, Whittle Way, Stevenage SG1 2FP	E(g)(i) Offices
Unit 13, Gateway 1000, Arlington Business Park, Whittle Way, Stevenage SG1 2FP	E(g)(i) Offices
Unit 14, Gateway 1000, Arlington Business Park, Whittle Way, Stevenage SG1 2FP	E(g)(i) Offices
Unit 15, Gateway 1000, Arlington Business Park, Whittle Way, Stevenage SG1 2FP	E(g)(i) Offices

Address	Use Class
Unit 16, Gateway 1000, Arlington Business Park, Whittle Way, Stevenage SG1 2FP	E(g)(i) Offices
Unit 17, Gateway 1000, Arlington Business Park, Whittle Way, Stevenage SG1 2FP	E(g)(i) Offices
Unit 18, Gateway 1000, Arlington Business Park, Whittle Way, Stevenage SG1 2FP	E(g)(i) Offices
Unit 2, Arlington Court, Arlington Business Park, Whittle Way, Stevenage SG1 2FS	E(g)(i) Offices
Unit 3, Arlington Court, Arlington Business Park, Whittle Way, Stevenage SG1 2FS	E(g)(i) Offices
Unit 4, Arlington Court, Arlington Business Park, Whittle Way, Stevenage SG1 2FS	E(g)(i) Offices
Unit 7, Arlington Court, Arlington Business Park, Whittle Way, Stevenage SG1 2FS	E(g)(i) Offices
Unit 8, Arlington Court, Arlington Business Park, Whittle Way, Stevenage SG1 2FS	E(g)(i) Offices
Sterling Court, Norton Green Road, Stevenage SG1 2FZ	E(g)(i) Offices
Unit 2, Modular Business Park, Norton Green Road, Stevenage SG1 2FZ	E(g)(i) Offices
Unit 4, Modular Business Park, Norton Green Road, Stevenage SG1 2FZ	E(g)(i) Offices
Six Hills Court, Norton Green Road, Stevenage SG1 2FZ	E(g)(i) Offices
Solar House, Kings Way, Stevenage SG1 2UA	E(g)(i) Offices
Unit 2, Caxton Way, Stevenage SG1 2DF	E(g)(i) Offices
Cambridge House, Campus 6, Caxton Way, Stevenage, SG1 2XD	E(g)(i) Offices
Unit 4, Caxton Place, Caxton Way, Stevenage, SG1 2UG	E(g)(i) Offices
Caxton Point Business Centre, Caxton Point, Caxton Way, Stevenage SG1 2XU	E(g)(i) Offices
EMS House, Unit 1 Bowmans Trading Estate, Bessemer Drive, Stevenage SG1 2DL	E(g)(i) Offices
Unit 17, Bowmans Trading Estate, Bessemer Drive, Stevenage SG1 2DL	E(g)(i) Offices
Business and Technology Centre, Bessemer Drive, Stevenage SG1 2DX	E(g)(i) Offices
Haden House, Argle Way, Stevenage SG1 2AD	E(g)(i) Offices
1 Viewpoint, Babbage Road, Stevenage SG1 2EQ	E(g)(i) Offices
2 Viewpoint, Babbage Road, Stevenage SG1 2EQ	E(g)(i) Offices
3 Viewpoint, Babbage Road, Stevenage SG1 2EQ	E(g)(i) Offices
4 Viewpoint, Babbage Road, Stevenage SG1 2EQ	E(g)(i) Offices
5 Viewpoint, Babbage Road, Stevenage SG1 2EQ	E(g)(i) Offices
6 Viewpoint, Babbage Road, Stevenage SG1 2EQ	E(g)(i) Offices
7 Viewpoint, Babbage Road, Stevenage SG1 2EQ	E(g)(i) Offices

Address	Use Class
8 Viewpoint, Babbage Road, Stevenage SG1 2EQ	E(g)(i) Offices
Unit 1, Hyatt Trading Estate, Babbage Road, Stevenage SG1 2EQ	E(g)(i) Offices
Fujitsu Site, Cavendish Road, Stevenage SG1 2DY	E(g)(i) Offices
Stevenage Borough Council Depot Site, Cavendish Road, Stevenage SG1 2ET	E(g)(i) Offices
Solutions House, Crompton Road, Stevenage SG1 2EE	E(g)(i) Offices
Unit 39, Crompton Road, Stevenage SG1 2EE	E(g)(i) Offices
Avnet House, Rutherford Close, Stevenage SG1 2EF	E(g)(i) Offices
Bedford House, Rutherford Close, Stevenage SG1 2EF	E(g)(i) Offices
Essex House, Rutherford Close, Stevenage SG1 2EF	E(g)(i) Offices
Middlesex House, Rutherford Close, Stevenage SG1 2EF	E(g)(i) Offices
Elopak House, Rutherford Close, Stevenage SG1 2EF	E(g)(i) Offices
Medway Court, Rutherford Close, Stevenage SG1 2EF	E(g)(i) Offices
Wiltron House, Rutherford Close, Stevenage SG1 2EF	E(g)(i) Offices